

# Hull Natural History Society

Llandudno, June 2011

Plants seen on the Great Orme, Saturday 11<sup>th</sup> June

<i>Pteridium aquilinum</i>	Bracken
<i>Phyllitis scolopendrium</i>	Hart's-tongue
<i>Asplenium ruta-muraria</i>	Wall-rue
<i>Pinus nigra</i>	Black/Corsican Pine
<i>Juniperus communis</i>	Juniper
<i>Ranunculus acris</i>	Meadow Buttercup
<i>Ranunculus repens</i>	Creeping Buttercup
<i>Ranunculus bulbosus</i>	Bulbous Buttercup
<i>Aquilegia vulgaris</i>	Columbine
<i>Thalictrum minus</i>	Lesser Meadow-rue
<i>Berberis julianae</i>	Chinese Barberry
<i>Parietaria judaica</i>	Pellitory-of-the-wall
<i>Stellaria media</i>	Common Chickweed
<i>Cerastium tomentosum</i>	Snow-in-summer
<i>Cerastium fontanum</i>	Common Mouse-ear
<i>Silene nutans</i>	Nottingham Catchfly
<i>Silene uniflora</i>	Sea Campion
<i>Silene dioica</i>	Red Campion
<i>Fallopia japonica</i>	Japanese Knotweed
<i>Rumex acetosella</i>	Sheep's Sorrel
<i>Rumex acetosa</i>	Common Sorrel
<i>Armeria maritima</i>	Sea Thrift
<i>Malva neglecta</i>	Dwarf Mallow
<i>Helianthemum nummularium</i>	Common Rock-rose
<i>Helianthemum oelandicum</i>	Hoary Rock-rose
<i>Viola riviniana</i>	Common Dog-violet
<i>Salix spp</i>	Willows
<i>Salix repens</i>	Creeping Willow
<i>Sisymbrium orientale</i>	Eastern Rocket
<i>Cardamine pratensis</i>	Cuckooflower
<i>Cardamine hirsuta</i>	Hairy Bitter-cress
<i>Cochlearia danica</i>	Danish Scurvygrass
<i>Coronopus didymus</i>	Lesser Swine-cress
<i>Brassica oleracea</i>	Wild Cabbage
<i>Calluna vulgaris</i>	Heather
<i>Erica cinerea</i>	Bell Heather
<i>Primula veris</i>	Cowslip
<i>Anagallis arvensis</i>	Scarlet Pimpernel
<i>Sedum sp.</i>	Stonecrop
<i>Saxifraga tridactylites</i>	Rue-leaved Saxifrage
<i>Filipendula vulgaris</i>	Dropwort
<i>Rubus caesius</i>	Dewberry
<i>Rubus fruticosus</i>	[Rubus fruticosus]
<i>Potentilla anserina</i>	Silverweed
<i>Potentilla erecta</i>	Tormentil
<i>Potentilla reptans</i>	Creeping Cinquefoil
<i>Geum urbanum</i>	Wood Avens
<i>Sanguisorba minor</i>	Salad Burnet
<i>Rosa pimpinellifolia</i>	Burnet Rose
<i>Rosa canina agg.</i>	Dog-rose



<b><i>Sorbus aria</i></b>	Common Whitebeam
<b><i>Cotoneaster horizontalis</i></b>	Wall Cotoneaster
<b><i>Cotoneaster cambricus</i></b>	Wild Cotoneaster
<b><i>Crataegus monogyna</i></b>	Hawthorn
<b><i>Anthyllis vulneraria</i></b>	Kidney Vetch
<b><i>Lotus corniculatus</i></b>	Common Bird's-foot-trefoil
<b><i>Lotus pedunculatus</i></b>	Greater Bird's-foot-trefoil
<b><i>Vicia cracca</i></b>	Tufted Vetch
<b><i>Vicia sativa</i></b>	Common Vetch
<b><i>Lathyrus pratensis</i></b>	Meadow Vetchling
<b><i>Ononis repens</i></b>	Common Restharrow
<b><i>Medicago lupulina</i></b>	Black Medick
<b><i>Trifolium repens</i></b>	White Clover
<b><i>Trifolium campestre</i></b>	Hop Trefoil
<b><i>Trifolium dubium</i></b>	Lesser Trefoil
<b><i>Trifolium pratense</i></b>	Red Clover
<b><i>Ulex europaeus</i></b>	Gorse
<b><i>Ulex gallii</i></b>	Western Gorse
<b><i>Epilobium montanum</i></b>	Broad-leaved Willowherb
<b><i>Mercurialis perennis</i></b>	Dog's Mercury
<b><i>Linum catharticum</i></b>	Fairy Flax
<b><i>Polygala vulgaris</i></b>	Common Milkwort
<b><i>Geranium sanguineum</i></b>	Bloody Crane's-bill
<b><i>Geranium dissectum</i></b>	Cut-leaved Crane's-bill
<b><i>Geranium molle</i></b>	Dove's-foot Crane's-bill
<b><i>Geranium robertianum</i></b>	Herb-Robert
<b><i>Erodium maritimum</i></b>	Sea Stork's-bill
<b><i>Erodium moschatum</i></b>	Musk Stork's-bill
<b><i>Hedera helix</i></b>	Common Ivy
<b><i>Smyrniolus olusatrum</i></b>	Alexanders
<b><i>Conopodium majus</i></b>	Pignut
<b><i>Pimpinella saxifraga</i></b>	Burnet-saxifrage
<b><i>Torilis japonica</i></b>	Upright Hedge-parsley
<b><i>Torilis nodosa</i></b>	Knotted Hedge-parsley
<b><i>Convolvulus arvensis</i></b>	Field Bindweed
<b><i>Calystegia silvatica</i></b>	Large Bindweed
<b><i>Echium vulgare</i></b>	Viper's-bugloss
<b><i>Myosotis arvensis</i></b>	Field Forget-me-not
<b><i>Ballota nigra</i></b>	Black Horehound
<b><i>Marrubium vulgare</i></b>	White Horehound
<b><i>Teucrium scorodonia</i></b>	Wood Sage
<b><i>Prunella vulgaris</i></b>	Selfheal
<b><i>Clinopodium ascendens</i></b>	Common Calamint
<b><i>Thymus polytrichus</i></b>	Wild Thyme
<b><i>Mentha x villosa</i></b>	Apple-mint
<b><i>Salvia verbenaca</i></b>	Wild Clary
<b><i>Plantago coronopus</i></b>	Buck's-horn Plantain
<b><i>Plantago maritima</i></b>	Sea Plantain
<b><i>Plantago lanceolata</i></b>	Ribwort Plantain
<b><i>Ligustrum vulgare</i></b>	Wild Privet
<b><i>Verbascum thapsus</i></b>	Great Mullein
<b><i>Chaenorhinum minus</i></b>	Small Toadflax
<b><i>Linaria purpurea</i></b>	Purple Toadflax
<b><i>Veronica officinalis</i></b>	Heath Speedwell
<b><i>Veronica chamaedrys</i></b>	Germander Speedwell
<b><i>Veronica arvensis</i></b>	Wall Speedwell
<b><i>Veronica spicata</i></b>	Spiked Speedwell
<b><i>Euphrasia sp.</i></b>	Eyebright

<b><i>Odontites vernus</i></b>	Red Bartsia
<b><i>Pinguicula vulgaris</i></b>	Common Butterwort
<b><i>Sherardia arvensis</i></b>	Field Madder
<b><i>Galium verum</i></b>	Lady's Bedstraw
<b><i>Galium saxatile</i></b>	Heath Bedstraw
<b><i>Sambucus nigra</i></b>	Elder
<b><i>Centranthus ruber</i></b>	Red Valerian
<b><i>Scabiosa columbaria</i></b>	Small Scabious
<b><i>Carlina vulgaris</i></b>	Carline Thistle
<b><i>Arctium minus</i></b>	Lesser Burdock
<b><i>Carduus tenuiflorus</i></b>	Slender Thistle
<b><i>Cirsium vulgare</i></b>	Spear Thistle
<b><i>Cirsium arvense</i></b>	Creeping Thistle
<b><i>Hypochaeris radicata</i></b>	Cat's-ear
<b><i>Hypochaeris maculata</i></b>	Spotted Cat's-ear
<b><i>Picris echioides</i></b>	Bristly Oxtongue
<b><i>Tragopogon pratensis agg.</i></b>	Goat's-beard
<b><i>Sonchus oleraceus</i></b>	Smooth Sow-thistle
<b><i>Sonchus asper</i></b>	Prickly Sow-thistle
<b><i>Crepis vesicaria</i></b>	Beaked Hawk's-beard
<b><i>Pilosella officinarum</i></b>	Mouse-ear-hawkweed
<b><i>Hieracium sp(p).</i></b>	Hawkweed(s)
<b><i>Inula conyzae</i></b>	Ploughman's-spikenard
<b><i>Solidago virgaurea</i></b>	Goldenrod
<b><i>Leucanthemum vulgare</i></b>	Oxeye Daisy
<b><i>Senecio inaequidens</i></b>	Narrow-leaved Ragwort
<b><i>Senecio jacobaea</i></b>	Common Ragwort
<b><i>Senecio vulgaris</i></b>	Groundsel
<b><i>Luzula multiflora</i></b>	Heath Wood-rush
<b><i>Carex flacca</i></b>	Glaucous Sedge
<b><i>Carex nigra</i></b>	Common Sedge
<b><i>Festuca pratensis</i></b>	Meadow Fescue
<b><i>Festuca rubra</i></b>	Red Fescue
<b><i>Festuca ovina</i></b>	Sheep's-fescue
<b><i>Lolium perenne</i></b>	Perennial Rye-grass
<b><i>Cynosurus cristatus</i></b>	Crested Dog's-tail
<b><i>Briza media</i></b>	Quaking-grass
<b><i>Dactylis glomerata</i></b>	Cock's-foot
<b><i>Catapodium rigidum</i></b>	Fern-grass
<b><i>Helictotrichon pratense</i></b>	Meadow Oat-grass
<b><i>Arrhenatherum elatius</i></b>	False Oat-grass
<b><i>Trisetum flavescens</i></b>	Yellow Oat-grass
<b><i>Koeleria macrantha</i></b>	Crested Hair-grass
<b><i>Holcus lanatus</i></b>	Yorkshire-fog
<b><i>Anthoxanthum odoratum</i></b>	Sweet Vernal-grass
<b><i>Bromopsis erecta</i></b>	Upright Brome
<b><i>Brachypodium sylvaticum</i></b>	False-brome
<b><i>Hordeum murinum</i></b>	Wall Barley
<b><i>Scilla verna</i></b>	Spring Squill
<b><i>Hyacinthoides non-scripta</i></b>	Bluebell
<b><i>Allium vineale</i></b>	Wild Onion
<b><i>Tamus communis</i></b>	Black Bryony
<b><i>Epipactis atrorubens</i></b>	Dark-red Helleborine
<b><i>Anacamptis pyramidalis</i></b>	Pyramidal Orchid
<b><i>Dactylorhiza fuchsii</i></b>	Common Spotted-orchid

List compiled G. Jarvis

**Birds seen on the Great Orme, Saturday 11<sup>th</sup> June**

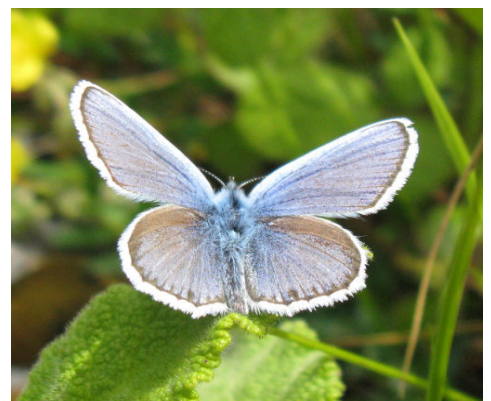
<i>Tadorna tadorna</i>	Shelduck
<i>Fulmarus glacialis</i>	Fulmar
<i>Morus bassanus</i>	Gannet
<i>Phalacrocorax carbo</i>	Cormorant
<i>Phalacrocorax aristotelis</i>	Shag
<i>Falco peregrinus</i>	Peregrine
<i>Rissa tridactyla</i>	Kittiwake
<i>Larus fuscus</i>	Lesser Black-backed Gull
<i>Larus argentatus</i>	Herring Gull
<i>Larus marinus</i>	Great Black-backed Gull
<i>Uria aalge</i>	Guillemot
<i>Alca torda</i>	Razorbill
<i>Columba livia</i>	Rock Dove / Feral Pigeon
<i>Columba palumbus</i>	Woodpigeon
<i>Streptopelia decaocto</i>	Collared Dove
<i>Cuculus canorus</i>	Cuckoo
<i>Apus apus</i>	Swift
<i>Alauda arvensis</i>	Skylark
<i>Hirundo rustica</i>	Swallow
<i>Anthus pratensis</i>	Meadow Pipit
<i>Motacilla alba</i>	Pied Wagtail
<i>Troglodytes troglodytes</i>	Wren
<i>Prunella modularis</i>	Dunnock
<i>Erithacus rubecula</i>	Robin
<i>Saxicola torquatus</i>	Stonechat
<i>Turdus merula</i>	Blackbird
<i>Turdus philomelos</i>	Song Thrush
<i>Sylvia atricapilla</i>	Blackcap
<i>Sylvia communis</i>	Whitethroat
<i>Phylloscopus collybita</i>	Chiffchaff
<i>Cyanistes caeruleus</i>	Blue Tit
<i>Pica pica</i>	Magpie
<i>Pyrrhocorax pyrrhocorax</i>	Chough
<i>Corvus monedula</i>	Jackdaw
<i>Corvus frugilegus</i>	Rook
<i>Corvus corone</i>	Carrion Crow
<i>Corvus corax</i>	Raven
<i>Passer domesticus</i>	House Sparrow
<i>Fringilla coelebs</i>	Chaffinch
<i>Carduelis chloris</i>	Greenfinch
<i>Carduelis carduelis</i>	Goldfinch
<i>Carduelis cannabina</i>	Linnet



*List compiled A Ashworth*

**Butterflies seen on the Great Orme Saturday 11<sup>th</sup> June**

- Grayling** -form "thyone" unique to Great Orme
- Silver-studded Blue**-race"caernensis" unique to Great Orme
- Dark Green Fritillary**
- Small Heath**
- Brown Argus**
- Small Tortoiseshell**



## Moths seen on the Great Orme Saturday 11<sup>th</sup> June

Cistus Forester  
Cinnabar  
*Pyrausta ostrinalis*  
*Scoparia ambigualis*  
*Crambus pratella*  
Mullein [larva]



---

## Plants seen in Marl Hall Woods, Sunday 12<sup>th</sup> June

<i>Polypodium vulgare</i> agg.	Polypody
<i>Phyllitis scolopendrium</i>	Hart's-tongue
<i>Polystichum setiferum</i>	Soft Shield-fern
<i>Dryopteris filix-mas</i>	Male-fern
<i>Dryopteris affinis</i>	Scaly Male-fern
<i>Dryopteris dilatata</i>	Broad Buckler-fern
<i>Larix decidua</i>	European Larch
<i>Pinus sylvestris</i>	Scots Pine
<i>Taxus baccata</i>	Yew
<i>Anemone nemorosa</i>	Wood Anemone
<i>Ranunculus acris</i>	Meadow Buttercup
<i>Ranunculus repens</i>	Creeping Buttercup
<i>Thalictrum minus</i>	Lesser Meadow-rue
<i>Ulmus glabra</i>	Wych Elm
<i>Urtica dioica</i>	Common Nettle
<i>Fagus sylvatica</i>	Beech
<i>Castanea sativa</i>	Sweet Chestnut
<i>Quercus ilex</i>	Evergreen Oak
<i>Quercus petraea</i>	Sessile Oak
<i>Carpinus betulus</i>	Hornbeam
<i>Corylus avellana</i>	Hazel
<i>Silene dioica</i>	Red Campion
<i>Polygonum aviculare</i>	Knotgrass
<i>Rumex sanguineus</i>	Wood Dock
<i>Hypericum cf. androsaemum</i>	Tutsan
<i>Tilia platyphyllos</i>	Large-leaved Lime
<i>Helianthemum nummularium</i>	Common Rock-rose
<i>Viola odorata</i>	Sweet Violet
<i>Viola riviniana</i>	Common Dog-violet
<i>Alliaria petiolata</i>	Garlic Mustard
<i>Philadelphus pubescens</i>	Broad-leaved Mock-orange
<i>Ribes uva-crispa</i>	Gooseberry
<i>Sedum acre</i>	Biting Stonecrop
<i>Filipendula vulgaris</i>	Dropwort
<i>Rubus caesius</i>	Dewberry
<i>Rubus fruticosus</i>	[ <i>Rubus fruticosus</i> ]
<i>Potentilla erecta</i>	Tormentil
<i>Potentilla sterilis</i>	Barren Strawberry
<i>Geum urbanum</i>	Wood Avens
<i>Sanguisorba minor</i>	Salad Burnet
<i>Rosa pimpinellifolia</i>	Burnet Rose



<b><i>Rosa canina</i></b>	Dog-rose
<b><i>Prunus avium</i></b>	Wild Cherry
<b><i>Prunus laurocerasus</i></b>	Cherry Laurel
<b><i>Cotoneaster horizontalis</i></b>	Wall Cotoneaster
<b><i>Cotoneaster bullatus</i></b>	Hollyberry Cotoneaster
<b><i>Crataegus monogyna</i></b>	Hawthorn
<b><i>Ulex europaeus</i></b>	Gorse
<b><i>Daphne laureola</i></b>	Spurge-laurel
<b><i>Epilobium montanum</i></b>	Broad-leaved Willowherb
<b><i>Euonymus europaeus</i></b>	Spindle
<b><i>Ilex aquifolium</i></b>	Holly
<b><i>Mercurialis perennis</i></b>	Dog's Mercury
<b><i>Rhamnus alaternus</i></b>	Mediterranean Buckthorn
<b><i>Acer platanoides</i></b>	Norway Maple
<b><i>Acer pseudoplatanus</i></b>	Sycamore
<b><i>Oxalis articulata</i></b>	Pink-sorrel
<b><i>Geranium sanguineum</i></b>	Bloody Crane's-bill
<b><i>Geranium robertianum</i></b>	Herb-Robert
<b><i>Hedera helix</i></b>	Common Ivy
<b><i>Sanicula europaea</i></b>	Sanicle
<b><i>Centaurium erythraea</i></b>	Common Centaury
<b><i>Calystegia silvatica</i></b>	Large Bindweed
<b><i>Echium vulgare</i></b>	Viper's-bugloss
<b><i>Stachys sylvatica</i></b>	Hedge Woundwort
<b><i>Teucrium scorodonia</i></b>	Wood Sage
<b><i>Ajuga reptans</i></b>	Bugle
<b><i>Prunella vulgaris</i></b>	Selfheal
<b><i>Origanum vulgare</i></b>	Wild Marjoram
<b><i>Thymus polytrichus</i></b>	Wild Thyme
<b><i>Plantago major</i></b>	Greater Plantain
<b><i>Fraxinus excelsior</i></b>	Ash
<b><i>Ligustrum vulgare</i></b>	Wild Privet
<b><i>Scrophularia nodosa</i></b>	Common Figwort
<b><i>Veronica officinalis</i></b>	Heath Speedwell
<b><i>Veronica chamaedrys</i></b>	Germander Speedwell
<b><i>Veronica spicata</i></b>	Spiked Speedwell
<b><i>Orobanche hederæ</i></b>	Ivy Broomrape
<b><i>Galium odoratum</i></b>	Woodruff
<b><i>Galium verum</i></b>	Lady's Bedstraw
<b><i>Sambucus nigra</i></b>	Elder
<b><i>Viburnum lantana</i></b>	Wayfaring-tree
<b><i>Lonicera periclymenum</i></b>	Honeysuckle
<b><i>Centranthus ruber</i></b>	Red Valerian
<b><i>Scabiosa columbaria</i></b>	Small Scabious
<b><i>Carlina vulgaris</i></b>	Carlina Thistle
<b><i>Centaurea nigra</i></b>	Common Knapweed
<b><i>Lapsana communis</i></b>	Nipplewort
<b><i>Hypochaeris maculata</i></b>	Spotted Cat's-ear
<b><i>Pilosella officinarum</i></b>	Mouse-ear-hawkweed
<b><i>Achillea millefolium</i></b>	Yarrow
<b><i>Matricaria discoidea</i></b>	Pineappleweed
<b><i>Senecio jacobaea</i></b>	Common Ragwort
<b><i>Arum maculatum</i></b>	Lords-and-Ladies
<b><i>Luzula sylvatica</i></b>	Great Wood-rush
<b><i>Carex sylvatica</i></b>	Wood-sedge
<b><i>Festuca rubra</i></b>	Red Fescue
<b><i>Briza media</i></b>	Quaking-grass
<b><i>Dactylis glomerata</i></b>	Cock's-foot

<b><i>Melica uniflora</i></b>	Wood Melick
<b><i>Helictotrichon pubescens</i></b>	Downy Oat-grass
<b><i>Holcus mollis</i></b>	Creeping Soft-grass
<b><i>Hyacinthoides non-scripta</i></b>	Bluebell
<b><i>Allium ursinum</i></b>	Ramsons
<b><i>Orchis mascula</i></b>	Early-purple Orchid

*List compiled G. Jarvis*